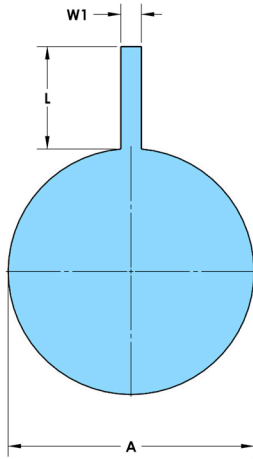
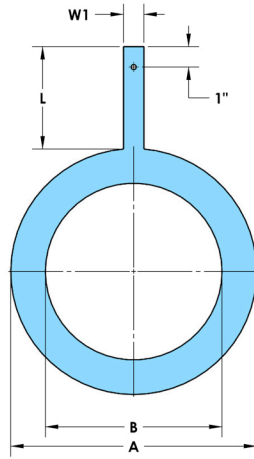




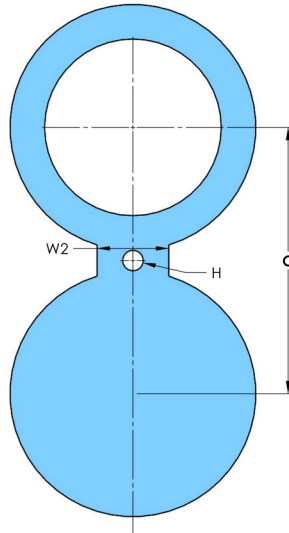
ANSI 600# Raised Face/Flat Face



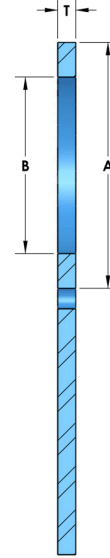
Type 1
Paddle Blind



Type 1A
Paddle Spacer



Type 2
Spectacle Blind



Dimensional Data (in)									Approximate Weights (lbs)		
Size	A	B	C	T	L	W1	W2	H	1	1A	2
1/2	2.00	0.62	2.62	0.25	4	1.0	1.50	N/A	1	1	1
3/4	2.50	0.82	3.25	0.25	4	1.0	1.50	N/A	1	1	1
1	2.75	1.05	3.50	0.25	4	1.0	2.25	0.750	1	1	1
1 1/4	3.12	1.44	3.88	0.38	4	1.0	2.25	0.750	2	2	2
1 1/2	3.62	1.68	4.50	0.38	4	1.0	2.62	0.875	2	2	3
2	4.25	2.16	5.00	0.38	4	1.0	2.25	0.750	2	2	3
2 1/2	5.00	2.64	5.88	0.50	4	1.0	2.62	0.875	4	3	6
3	5.75	3.26	6.62	0.50	4	1.0	2.62	0.875	5	4	7
3 1/2	6.25	3.76	7.25	0.62	4	1.0	3.00	1.000	7	5	10
4	7.50	4.26	8.50	0.62	4	1.0	3.00	1.000	9	6	14
5	9.38	5.30	10.50	0.75	4	1.0	3.38	1.125	16	11	26
6	10.38	6.36	11.50	0.88	5	1.0	3.38	1.125	23	15	36
8	12.50	8.33	13.75	1.12	5	1.0	3.75	1.250	41	24	63
10	15.62	10.42	17.00	1.38	5	1.5	4.12	1.375	78	45	119
12	17.88	12.39	19.25	1.62	5	1.5	4.12	1.375	119	64	178
14	19.25	13.62	20.75	1.75	5	1.5	4.50	1.500	149	76	220
16	22.12	15.62	23.75	2.00	6	1.5	4.88	1.625	224	115	332
18	24.00	17.62	25.75	2.12	6	1.5	5.25	1.750	278	131	403
20	26.75	19.56	28.50	2.50	6	1.5	5.25	1.750	405	192	591
24	31.00	23.50	33.00	2.88	6	1.5	6.00	2.000	623	270	887