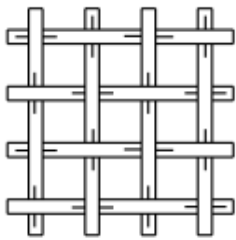
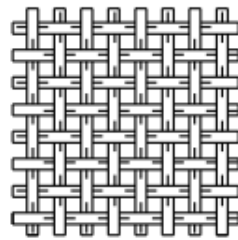


Wire Mesh Type Base Material

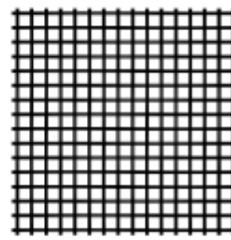
Mesh	Wire Diameters		Width of Opening		% of Opening	Material Range
	in.	mm.	in.	mm.		
2	.063	1.60	.437	11.10	76.4%	Carbon Steel, 304SS, 316SS
3	.063	1.60	.270	6.86	65.5%	Carbon Steel, 304SS, 316SS
4	.063	1.60	.187	4.75	56.0%	Carbon Steel, 304SS, 316SS
5	.063	1.60	.137	3.48	46.9%	Carbon Steel, 304SS, 316SS
6	.047	1.19	.120	3.50	51.8%	Carbon Steel, 304SS, 316SS
8	.047	1.19	.078	1.98	38.9%	Carbon Steel, 304SS, 316SS



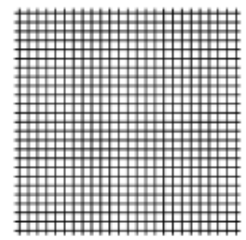
4 Mesh
.072



8 Mesh
.047



10 Mesh
.025



20 Mesh
.016

Wire Mesh Liner Material

Mesh	Wire Diameters		Width of Opening		% of Opening	Material Range
	in.	mm.	in.	mm.		
10	.0250	.640	.075	1.91	56.3%	304SS, 316SS
20	.0160	.406	.034	0.86	46.2%	304SS, 316SS
30	.0130	.330	.020	0.52	37.1%	304SS, 316SS
40	.0100	.254	.015	0.38	36.0%	304SS, 316SS
50	.0090	.229	.011	0.28	30.3%	304SS, 316SS
60	.0075	.191	.009	0.23	30.5%	304SS, 316SS
80	.0055	.140	.007	0.19	31.4%	304SS, 316SS
100	.0045	.114	.006	0.14	30.3%	304SS, 316SS