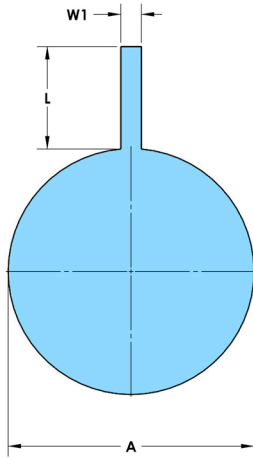
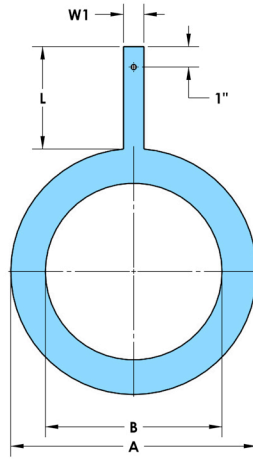




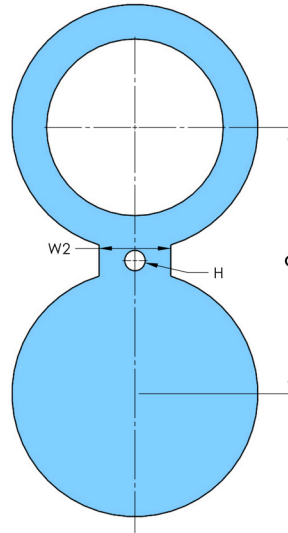
ANSI 300# Raised Face/Flat Face



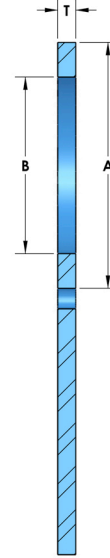
Type 1
Paddle Blind



Type 1A
Paddle Spacer



Type 2
Spectacle Blind



Size	Dimensional Data (in)								Approximate Weights (lbs)		
	A	B	C	T	L	W1	W2	H	1	1A	2
1/2	2.00	0.62	2.62	0.25	4	1.0	1.5	N/A	1	1	1
3/4	2.50	0.82	3.25	0.25	4	1.0	1.5	N/A	1	1	1
1	2.75	1.05	3.50	0.25	4	1.0	1.5	N/A	1	1	1
1 1/4	3.12	1.66	3.88	0.25	4	1.0	1.5	N/A	1	1	2
1 1/2	3.62	1.90	4.50	0.25	4	1.0	2.0	N/A	2	1	2
2	4.25	2.38	5.00	0.38	4	1.0	2.0	0.750	2	2	3
2 1/2	5.00	2.88	5.88	0.38	4	1.0	2.5	0.875	3	2	4
3	5.75	3.50	6.62	0.38	4	1.0	2.5	0.875	4	3	5
3 1/2	6.38	4.00	7.25	0.50	4	1.0	2.5	0.875	6	4	8
4	7.00	4.50	7.88	0.50	4	1.0	2.5	0.875	7	4	9
5	8.38	5.56	9.25	0.62	4	1.0	3.0	0.875	11	7	16
6	9.75	6.62	10.62	0.62	4	1.0	3.0	0.875	14	8	21
8	12.00	8.62	13.00	0.88	4	1.0	3.5	1.000	30	15	43
10	14.12	10.75	15.25	1.00	5	1.0	4.0	1.125	46	21	65
12	16.50	12.75	17.75	1.12	5	1.5	4.0	1.250	71	30	98
14	19.00	14.00	20.25	1.25	5	1.5	4.75	1.250	104	49	149
16	21.12	16.00	22.50	1.50	5	1.5	4.88	1.375	153	67	216
18	23.38	18.00	24.75	1.62	5	1.5	4.50	1.375	202	84	282
20	25.62	20.00	27.00	1.75	6	1.5	4.75	1.375	261	105	360
24	30.38	24.00	32.00	2.00	6	1.5	5.50	1.625	417	160	571